



BLUMENBECKER

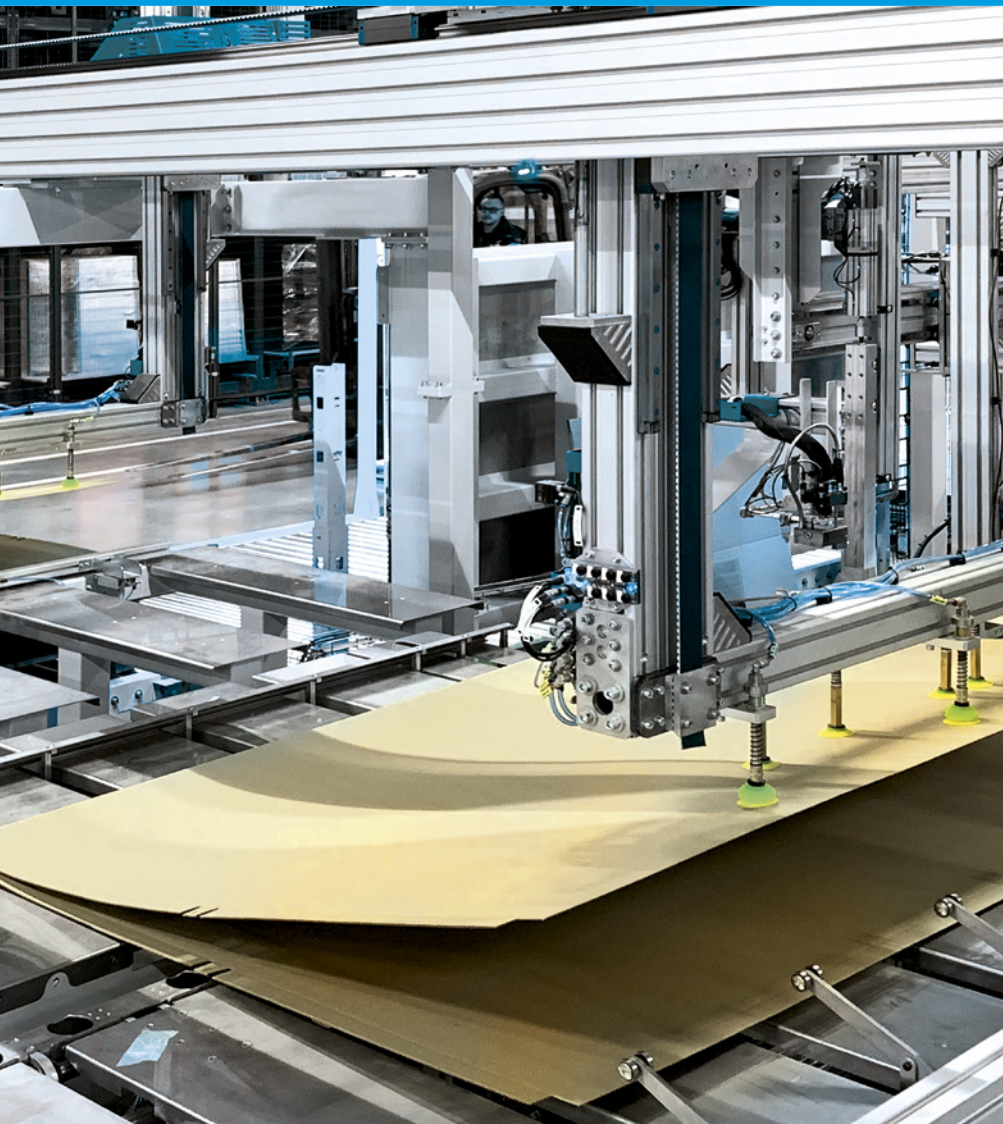
WE DELIVER SOLUTIONS

INDUSTRY AUTOMATION

INDUSTRY SUPPLIES

INDUSTRIAL SERVICES

BOX FORMING MACHINE BEM410



The **BEM410 cardboard forming machine** was developed to automate the folding process of FEFCO410 type cardboard boxes. The whole process is automatic. Starting from taking the cardboard sheet from the loaded stack, through its positioning, forming to the required shape and then gluing and releasing the finished product from the machine. The boxes are glued with hot melt adhesive.

The use of electric servo drives in the machine makes the machine extremely efficient and gives the possibility of automatic change-over to a wide range of dimensions of formed cardboard.

After gluing, the box can be guided with the open lid facing up or down. The box can be guided with the lid facing downwards and it is possible to access the box transported in the packing line on both sides. In case of products consisting of many elements, e.g. furniture, this solution can significantly shorten the length of the packaging line, as the stations are located on both sides of the packaging conveyor.

PRODUCTS

| FEFCO 410 type
cardboards

INDUSTRIES

| Packaging in the
furniture, food and related
industries.

APPLICATION

| Packing products into
cardboard boxes.

TECHNICAL SPECIFICATION

SPECIFICATION DETAILS

Length	10 000 mm
Width	7600 mm
Height	4500 mm
Drive	Electric (SEW, FESTO)

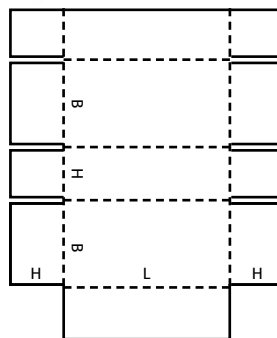
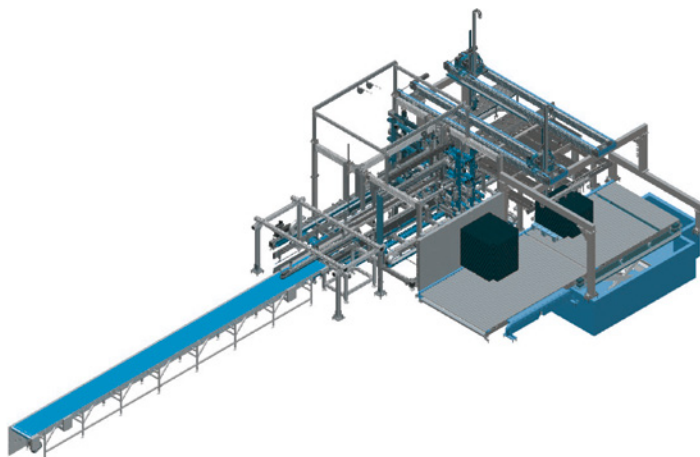
SERVICED PRODUCT

Cardboard type	FEFCO 410
----------------	-----------

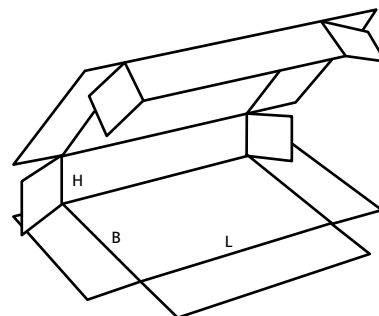
PRODUCT DIMENSIONS

Length [L]	450-2500 mm
Width [B]	300-800 mm
Height [H]	45-160 mm
Thickness	2-3 mm
Max stack height	1000 mm

MAX. CAPACITY: 8-12 pcs./min



FEFCO 410



Machines with different parameters available on individual customer order.

ADDITIONAL FEATURES

- | Wide range of supported cardboard dimensions
- | Automatic changeover to a given cardboard size
- | No downtime during cardboard stack changing
- | Modular design of the machine

ADVANTAGES FOR THE CUSTOMER

- | Reduction of personnel cost
- | Stable performance
- | Repeated quality of finished products
- | Rapid adaptation to production changes

